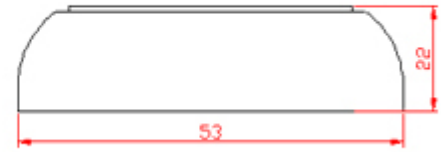
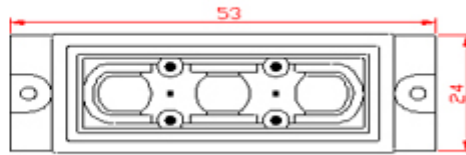


T3 Specification

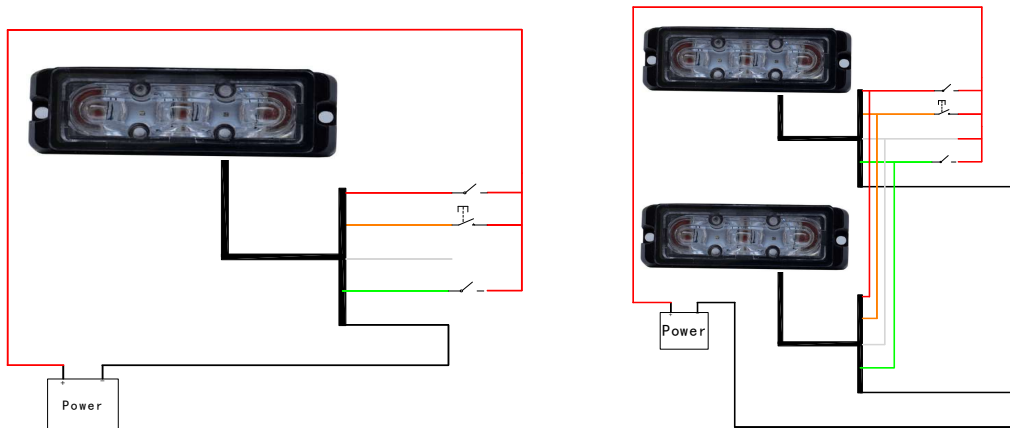


PRODUCT FEATURES:

- High quality 3 w LED bulb , warranty 2 years ;
- Special technology, waterproof, dust proof, seismic design can adapt to the various environment ;
- Flash pattern with memory function if suddenly power off ;
- Built-in the reverse polarity protection circuit can protect installation wiring and vehicle electrical components

ITEM	VOLTAGE	WORK ENVIRONMENT	POWER	LED	INSTALLATION
LTDG-J3-1	DC 12/24V	-40℃~+70℃	9W	3PCS, 3W	SURFACE

WIRING:



Red wire: power “+” Black wire: power “-” Yellow wire:flash pattern
White wire: synchronization Green Wire: luminance weakening

FUNCTIONS:

RED:Extend the RED wire to the positive (+) power source.

BLACK:Extend the BLACK wire to the negative (-) terminal of the vehicle’s battery.

GREEN:When GREEN wire connects to positive power source,all LEDs’ luminance weakening.When beaking, back to normal.

YELLOW: When YELLOW wire connects to positive power source less than 1s,flashing pattern changes to next one; When YELLOW wire connects to positive power source more than 3s, flashing pattern back to previous one.

WHITE: Synchronization wire.Cap off this wire for single light.If need synchronization flashing for multiple lights, connect all yellow wire together and then connect all white wire to poistive power source to synchronize output..

