



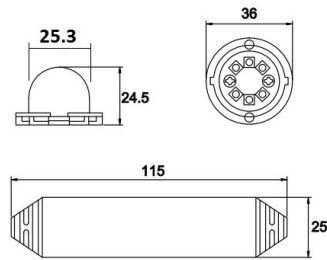
Product Specifications

LTDG92-2

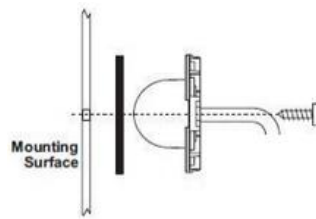


Model	LTDG92-2			Colour Available	Amber,Blue,Red,Green,Purple,White
Light Characteristics	LED Power	12 pcs of 3w LEDs	Physical Characteristics	Ambient temperature	-20--+65°C
	LED Lifespan	100000		Mounting	Surface mount / Bracket mount
	Flash settings	1~4Hz		Flash patterns	18
	Lens	Clear Lens		Packing size	135mm L×130mm W×83mm H
Electrical Characteristics	Voltage	DC 10~28V	Product Dimension	24.5mm L×25.3mm W×36mm H	
	Max Power	20W	Net Weight / Gross Weight	0.22KG / 0.3KG	

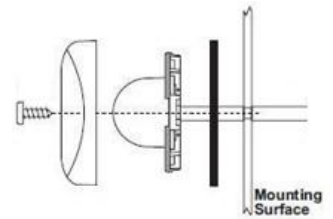
DIMENSIONS:



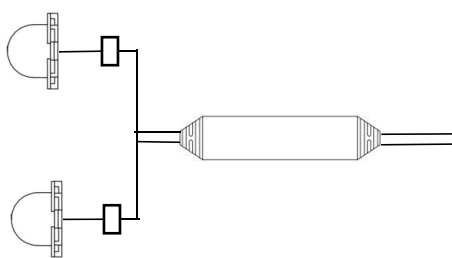
MOUNTING: ①



②



WIRING:



- RED · TO + 10-28DC (fuse @ 3A)
- BLACK · TO Chassis Ground
- WHITE · For Simultaneous or Alternating Flash
 - Group1 Heads: (wiring-White connected to RED) will flash together
 - Group2 Heads: (wiring-White not connected to RED) will flash together
 - Group1 Heads will alternate with Group2 Heads
- YELLOW · For Synchronization & Flash Patterns
 - Connect YELLOW wires of all heads together for synchronization

FLASH PATTERN:

- | | | | |
|----------------------------|---------------------------------|----------------------------------|---------------------------|
| 0. <u>Random (default)</u> | 6. <u>Ultra (split)</u> | 12. <u>Quint (all)</u> | 18. <u>Steady 4 (all)</u> |
| 1. <u>Single (split)</u> | 7. <u>Single - Quad (split)</u> | 13. <u>Mega (all)</u> | |
| 2. <u>Double (split)</u> | 8. <u>Single H/L(split)</u> | 14. <u>Ultra (all)</u> | |
| 3. <u>Quad (split)</u> | 9. <u>Single (all)</u> | 15. <u>Single-Quad (all)</u> | |
| 4. <u>Quint (split)</u> | 10. <u>Double (all)</u> | 16. <u>Single H/L(all)</u> | |
| 5. <u>Mega (split)</u> | 11. <u>Quad (all)</u> | 17. <u>Steady 2 (california)</u> | |

To select Flash Pattern, apply +12V to YELLOW wire:
 .for less than 1 second next pattern
 .for more than 1 second for previous pattern
 .for more than 5 seconds for reset to default